



COBRA PRINT

HIGH FIDELITY COLOUR. OPTIMISED WORKFLOW.

The Cobra 330 print engine comes with the best-of-breed RIP and workflow solution available.

Digital Factory is a completely integrated print as well as print and cut software package, easily extendable and the most user-friendly print production companion on the market. Empowering all digital production projects on and around the Cobra 330 - from start to finish.



Cobra330 Edition



DIGITAL FACTORY FEATURES A CENTRAL HUB FOR SIMPLIFIED WORKFLOW MANAGEMENT

VISUAL PRODUCTION MANAGER (VPM)

VPM includes all of the most widely used pre-production, job management tools you need in one single easy to use location.



Easy Access Multiple Queue Tabs with simultaneous multiple printer support

Easy access pre-production tools

Job scheduling with detailed file information

Job archive

Optimised job nesting

Automatic Cut mark placing

Contour cutting of complex shapes

Step and repeat

Visual print preview

DIGITAL FACTORY PRINT COBRA 330™ EDITION CAN EASILY BE EXTENDED



Digital Factory Print and Cut Production
Multiple printer/cutter support for higher volume shops.



Digital Factory Print and Cut
Single printer/single cutter support for shops using print and cut workflows.



Digital Factory Print
Single printer support for shops wishing to optimise digital print workflows.

*Specialty modules can also be added to packages as required. Visit www.cadlink.com/product/digitalfactory11/ for details.

FOR MAXIMUM PERFORMANCE. STREAMLINE AND AUTOMATE THE COBRA 330™ PRODUCTION WORKFLOW.

SIMPLIFIED FILE PROCESSING



Import virtually any file types (including .pdf)

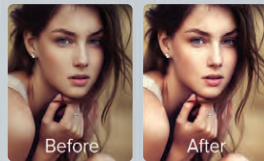


Print direct from design application(s)



Cloud-based as well as network printing

IN-RIP TOOLS FOR PRE-PRODUCTION



Improve file quality

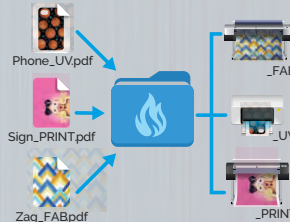


Apply special effects



Production mark-up tools

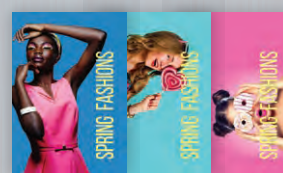
AUTOMATION, JOB MANAGEMENT AND SCHEDULING



Automatic job sorting



Barcode job processing



Custom templates for automated print layout

MULTIPLE APPLICATION SUPPORT



Precise, vibrant colour printing on all media types



Print and cut production with fully integrated contour cutting



Specialty print applications

BENEFIT FROM A PERFECT MATCH: COBRA 330™ & DIGITAL FACTORY*



Unmatched colour quality.

State-of-the-art colour management engine ensures precise, vibrant colour printing,



Cost Savings.

Enhanced automation tools provide instantly measurable labor and consumable savings.



Unlimited workflow options.

Support virtually all digital print applications.



Standardise shop software.

Run all printers and cutters with a single software solution

DIGITAL FACTORY COBRA330™ EDITION FEATURES*:

GENERAL RIP FEATURES

- Windows® 11, 10 support (32/64 bit) support
- Optimised RIP processing speeds
- Start to finish .pdf workflow support
- Send jobs directly to queues from design applications (PhotoShop™, Corel™, Illustrator™)
- RIP once, print many
- Preset colour profiles for white, black, and coloured fabrics and other substrates
- Templates support for exact positioning of graphics
- "KnockMeBlackOut", black and grey colour removal
- "KnockMeColorOut", white and other colour removal
- Transparency Opacity
- Send job with underbase directly from design applications
- Automatic trapping in queues
- High Speed printmodes with no quality reduction
- Multiple media color profiles supported
- Lightning fast 64-bit architecture
- Optimised multiple job processing (RIP threading)
- Simplified navigation; Easy queue menu tabs, page view and job properties
- Grid option in job preview window
- Instant access to job information using "mouse-over image"
- Automated TCP/IP port search for easier network printing setup
- Quick job reprints with save job backup (.jpb file) option
- Export queues and printer packages

- Worldwide language support using Unicode
- 4K Display Support

COLOUR MANAGEMENT TOOLS

- High fidelity, ICC compliant colour management engine (ColorLogic)
- Simple color volume controls
- Complete manual colour curve controls by image detail (shadows, mid-tones, highlights)
- Advanced colour correction tools interface
- Easy colour adjustments
- Colour adjustment wizard for merging ICC rendering intents
- Easy-access to printmodes and printmode overrides

PRE-PRODUCTION TOOLS

- Visual print preview
- Raw data preview
- Multi-copy with spacing controls (In-Queue feature)
- Cropping controls of image and job (In-Queue feature)
- Rotation controls of image and job (In-Queue feature)
- Mirror, invert image and job (In-Queue feature)
- Scale image and job to any size (In-Queue feature)
- Soft proofing
- No-ink* option that applies rasterized customisable pattern options (holes, stripes) to graphics. Reduces toner consumption, improves colour fastness and softens final print on garment.
- "No-ink" patterns automatically adjust size of no-ink areas based on image transparency. Greatly improves image quality

- Built-in special effects/filters (distressed, distressed frames, sharpen)
- Updated Supersize filter functionality for improved image resolution
- Job colour replacement
- Simple application of choke to white underbase
- Export template layouts with improved template user interface
- Image duplication interface

JOB MANAGEMENT AND SCHEDULING TOOLS

- Unique, single window visual interface, one central easy to manage hub for all jobs
- Easy to use queue set-up wizard. Set up production queues quickly and easily
- Auto-scheduling or manual scheduling of jobs
- On-the-fly job prioritisation using simple drag and drop
- Job archiving, history, print status and job log
- Job notes
- Hot folder support
- Gmail support. Send jobs directly to queues using mobile devices via Gmail
- Bar code support for automated production
- Enhanced plug-ins for Corel, Illustrator and Photoshop that send print jobs directly to production queues with automated white underbase created. No cumbersome job preparation required.
- High volume production options available (RIP Server + Multiple machine support, added cost applied)

FIERY FAMILY OF SOFTWARE PRODUCTS

Discover the benefits of using a single source for all your design and production requirements



www.cadlink.com

Digital Factory is a registered trademark of Fiery, LLC.

All other trademarks are a property of their respective owners.

www.cobra-print.com

DIGITAL FACTORY V11 Cobra 330™ EDITION:

All features and functionality described is subject to change. This datasheet is a work of intent and does not provide any guaranteed contractual warranty.

COMPATIBLE WITH:

Windows 11

Windows 10

SYSTEM REQUIREMENTS:

CPU Intel i5-17 2.6-3.0GHz

Storage 500 SSD (recommended) or HDD

RAM 8-12GB

* pre-release for LabelExpo 2023 Brussels & subject to change without notice.